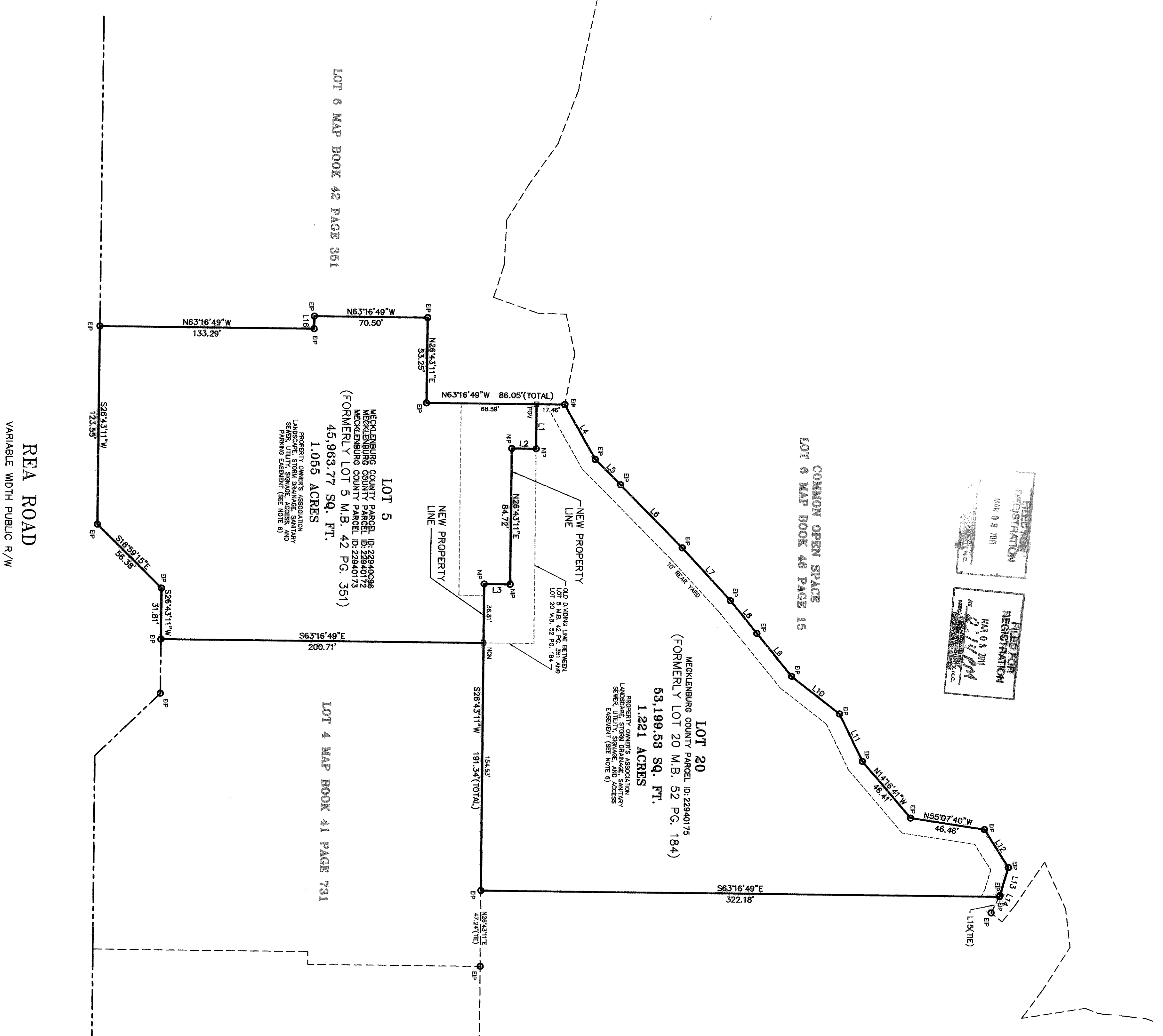


LOCATION MAP

FILED FOR REGISTRATION
MAR 09 2011
2:11 PM
NORTH CAROLINA DEPARTMENT OF REVENUE



ELEVATION CHURCH
LOT 19 MAP BOOK 52 PAGE 184

LINE	BEARING	DISTANCE
1	N63°16'49"W	70.50
2	N63°16'49"W	133.29
3	N63°16'49"W	86.05(TOTAL)
4	N63°16'49"W	17.46
5	N63°16'49"W	88.99
6	N63°16'49"W	53.29
7	N63°16'49"W	17.46
8	N63°16'49"W	86.05(TOTAL)
9	N63°16'49"W	84.72
10	N63°16'49"W	35.81
11	N63°16'49"W	181.54(TOTAL)
12	N63°16'49"W	144.41
13	N63°16'49"W	200.17
14	N63°16'49"W	200.17
15	N63°16'49"W	181.54(TOTAL)
16	N63°16'49"W	181.54(TOTAL)
17	N63°16'49"W	181.54(TOTAL)
18	N63°16'49"W	181.54(TOTAL)
19	N63°16'49"W	181.54(TOTAL)
20	N63°16'49"W	181.54(TOTAL)
21	N63°16'49"W	181.54(TOTAL)
22	N63°16'49"W	181.54(TOTAL)
23	N63°16'49"W	181.54(TOTAL)
24	N63°16'49"W	181.54(TOTAL)
25	N63°16'49"W	181.54(TOTAL)
26	N63°16'49"W	181.54(TOTAL)
27	N63°16'49"W	181.54(TOTAL)
28	N63°16'49"W	181.54(TOTAL)
29	N63°16'49"W	181.54(TOTAL)
30	N63°16'49"W	181.54(TOTAL)
31	N63°16'49"W	181.54(TOTAL)
32	N63°16'49"W	181.54(TOTAL)
33	N63°16'49"W	181.54(TOTAL)
34	N63°16'49"W	181.54(TOTAL)
35	N63°16'49"W	181.54(TOTAL)
36	N63°16'49"W	181.54(TOTAL)
37	N63°16'49"W	181.54(TOTAL)
38	N63°16'49"W	181.54(TOTAL)
39	N63°16'49"W	181.54(TOTAL)
40	N63°16'49"W	181.54(TOTAL)
41	N63°16'49"W	181.54(TOTAL)
42	N63°16'49"W	181.54(TOTAL)
43	N63°16'49"W	181.54(TOTAL)
44	N63°16'49"W	181.54(TOTAL)
45	N63°16'49"W	181.54(TOTAL)
46	N63°16'49"W	181.54(TOTAL)
47	N63°16'49"W	181.54(TOTAL)
48	N63°16'49"W	181.54(TOTAL)
49	N63°16'49"W	181.54(TOTAL)
50	N63°16'49"W	181.54(TOTAL)
51	N63°16'49"W	181.54(TOTAL)
52	N63°16'49"W	181.54(TOTAL)
53	N63°16'49"W	181.54(TOTAL)
54	N63°16'49"W	181.54(TOTAL)
55	N63°16'49"W	181.54(TOTAL)
56	N63°16'49"W	181.54(TOTAL)
57	N63°16'49"W	181.54(TOTAL)
58	N63°16'49"W	181.54(TOTAL)
59	N63°16'49"W	181.54(TOTAL)
60	N63°16'49"W	181.54(TOTAL)
61	N63°16'49"W	181.54(TOTAL)
62	N63°16'49"W	181.54(TOTAL)
63	N63°16'49"W	181.54(TOTAL)
64	N63°16'49"W	181.54(TOTAL)
65	N63°16'49"W	181.54(TOTAL)
66	N63°16'49"W	181.54(TOTAL)
67	N63°16'49"W	181.54(TOTAL)
68	N63°16'49"W	181.54(TOTAL)
69	N63°16'49"W	181.54(TOTAL)
70	N63°16'49"W	181.54(TOTAL)
71	N63°16'49"W	181.54(TOTAL)
72	N63°16'49"W	181.54(TOTAL)
73	N63°16'49"W	181.54(TOTAL)
74	N63°16'49"W	181.54(TOTAL)
75	N63°16'49"W	181.54(TOTAL)
76	N63°16'49"W	181.54(TOTAL)
77	N63°16'49"W	181.54(TOTAL)
78	N63°16'49"W	181.54(TOTAL)
79	N63°16'49"W	181.54(TOTAL)
80	N63°16'49"W	181.54(TOTAL)
81	N63°16'49"W	181.54(TOTAL)
82	N63°16'49"W	181.54(TOTAL)
83	N63°16'49"W	181.54(TOTAL)
84	N63°16'49"W	181.54(TOTAL)
85	N63°16'49"W	181.54(TOTAL)
86	N63°16'49"W	181.54(TOTAL)
87	N63°16'49"W	181.54(TOTAL)
88	N63°16'49"W	181.54(TOTAL)
89	N63°16'49"W	181.54(TOTAL)
90	N63°16'49"W	181.54(TOTAL)
91	N63°16'49"W	181.54(TOTAL)
92	N63°16'49"W	181.54(TOTAL)
93	N63°16'49"W	181.54(TOTAL)
94	N63°16'49"W	181.54(TOTAL)
95	N63°16'49"W	181.54(TOTAL)
96	N63°16'49"W	181.54(TOTAL)
97	N63°16'49"W	181.54(TOTAL)
98	N63°16'49"W	181.54(TOTAL)
99	N63°16'49"W	181.54(TOTAL)
100	N63°16'49"W	181.54(TOTAL)

THIS PLAT IS NOT SUBJECT TO THE PROVISIONS OF THE CITY OF CHARLOTTE, NORTH CAROLINA, CHAPTER 36A, ARTICLE 1, SECTION 36A-1-101, WHICH PROVIDES THAT THE CITY OF CHARLOTTE, NORTH CAROLINA, SHALL NOT RECORD ANY PLAT TO WHICH THIS DEVELOPMENT IS SUBJECT UNLESS ALL APPLICABLE REGULATIONS AND ORDINANCES OF THE CITY OF CHARLOTTE, NORTH CAROLINA, HAVE BEEN OBTAINED AND THE CITY OF CHARLOTTE, NORTH CAROLINA, HAS ISSUED A DEVELOPMENT PERMIT FOR THE PROJECT. THE CITY OF CHARLOTTE, NORTH CAROLINA, HAS REVIEWED THIS PLAT AND HAS DETERMINED THAT IT IS IN COMPLIANCE WITH THE CITY OF CHARLOTTE, NORTH CAROLINA, REGULATIONS AND ORDINANCES. THE CITY OF CHARLOTTE, NORTH CAROLINA, HAS ISSUED A DEVELOPMENT PERMIT FOR THE PROJECT.

Reviewed by: *[Signature]* Date: 3/13/2011

Planned by: *[Signature]* Date: 3/13/2011

REFERENCES

1. NCOT HIGHWAY PLANS: PROJECT NO. U-3307B, DATED: 4/28/00.
2. NCOT HIGHWAY PLANS: PROJECT NO. 9.8100352, DATED: 6/24/98.
3. NCOT HIGHWAY PLANS: PROJECT NO. U-2506, DATED: 4/30/99.
4. DEED BOOK 5386, PAGE 228, (APPARENT SOURCE OF TITLE).
5. DEED BOOK 18869, PAGE 838.
6. MAP BOOK 41, PAGE 731.
7. MAP BOOK 42, PAGE 351.
8. MAP BOOK 52, PAGE 184.
9. UNIT FILE 712 PAGE 1.

NOTES

1. NORTH ORIENTATION BASED ON MAP BOOK 42 PAGE 351 AND MAP BOOK 52 PAGE 184 ON FILE IN THE MECKLENBURG COUNTY PUBLIC REGISTRY.
2. ALL DISTANCES SHOWN HEREON ARE HORIZONTAL GROUND DISTANCES UNLESS OTHERWISE NOTED.
3. ALL AREAS SHOWN HEREON WERE COMPUTED BY THE COORDINATE METHOD UNLESS OTHERWISE NOTED.
4. ALL PROPERTY CORNERS MARKED BY IRON PINS UNLESS OTHERWISE NOTED.
5. SUBJECT PROPERTY IS CURRENTLY ZONED O-(10D) WITH SETBACK LIMITATIONS AS FOLLOWS:
 LOT 5 FRONT YARD SETBACK: 50'
 SIDE YARD: 10'
 REAR YARD: 20'
 (AS SHOWN)
6. ALL AREAS OUTSIDE THE BUILDING FOOTPRINT ARE THE PROPERTY OWNERS ASSOCIATION LANDSCAPE, STORM DRAINAGE, SANITARY SEWER UTILITY, STORMWATER, ACCESS, AND PARKING ESSENTIALS.
7. THIS PLAT WAS PREPARED WITHOUT BENEFIT OF A TITLE REPORT OR OPINION AND DOES NOT PURPORT TO SHOW ALL MATTERS OF RECORD WHICH MAY AFFECT THE SUBJECT PROPERTY.
8. LOT 9 AS SHOWN, INCLUDES THE PARKING LOT AND GARBAGE CONTAINER THAT SERVE LOT 5.
9. JAMES ALAN CLINE, A PROFESSIONAL LAND SURVEYOR, NPLS L-3504 CERTIFY TO ONE OR MORE OF THE FOLLOWING:
 A. THAT THIS PLAT IS OF A SURVEY THAT CREATES A SUBDIVISION OF LAND WITHIN THE JURISDICTION OF A MUNICIPALITY THAT HAS AN ORDINANCE THAT REGULATES PARCELS OF LAND.
 B. THAT THIS PLAT IS OF A SURVEY THAT IS LOCATED IN SUCH A PORTION OF A COUNTY OR MUNICIPALITY THAT IS UNREGULATED AS TO AN ORDINANCE THAT REGULATES PARCELS OF LAND.
 C. THAT THIS PLAT IS OF A SURVEY OF AN EXISTING PARCEL OR PARCELS OF LAND.
 D. THAT THIS PLAT IS OF A SURVEY OF ANOTHER CATEGORY, SUCH AS THE EXCEPTION TO THE DEFINITION OF A SUBDIVISION.
 E. THAT THE INFORMATION AVAILABLE TO THIS SURVEYOR IS SUCH THAT I AM UNABLE TO MAKE A DETERMINATION TO THE BEST OF MY KNOWLEDGE AND BELIEF AS TO THE PROVISIONS CONTAINED IN (A) THROUGH (D) ABOVE.

STATE OF NORTH CAROLINA, MECKLENBURG COUNTY

I, JAMES A. CLINE, CERTIFY THAT THIS PLAT WAS DRAWN BY ME FROM AN ACTUAL SURVEY AND THAT I AM A LICENSED PROFESSIONAL LAND SURVEYOR IN THE MECKLENBURG COUNTY PUBLIC REGISTRY. THE SURVEY WAS CONDUCTED IN THE FIELD AND THE RESULTS WERE CHECKED BY ME. THE SURVEY WAS CONDUCTED IN THE FIELD AND THE RESULTS WERE CHECKED BY ME. THE SURVEY WAS CONDUCTED IN THE FIELD AND THE RESULTS WERE CHECKED BY ME.

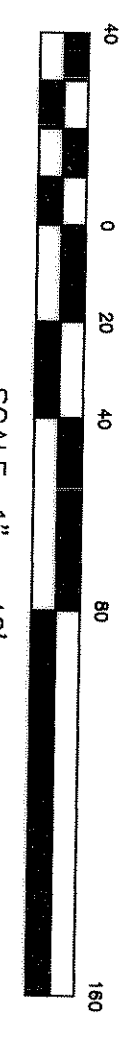
THAT THIS PLAT WAS PREPARED AS CALCULATED IS 1:1,000+/- THAT THIS PLAT WAS PREPARED AS CALCULATED IS 1:1,000+/- THAT THIS PLAT WAS PREPARED AS CALCULATED IS 1:1,000+/-

WITNESSED BY ORIGINAL SIGNATURE, REGISTRATION NUMBER, AND SEAL THIS 3rd DAY OF MARCH, A.D. 2011.

JAMES A. CLINE
 3/13/2011
 SEAL
 L-3504
 NORTH CAROLINA
 LAND SURVEYOR

SYMBOL LEGEND

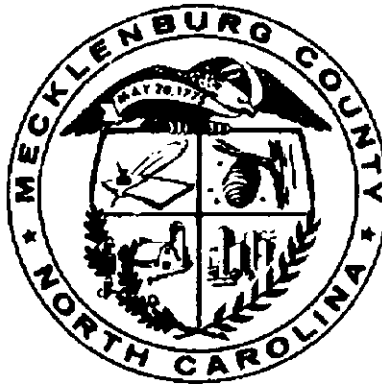
□	FOUND CONC. MONUMENT
○	NEW CONC. MONUMENT
●	NEW IRON PIN
○	NEW IRON PIN
○	SET PK. NAIL
○	COMPUTED POINT
○	MAP BOOK
○	MAP BOOK



RECOMBINATION PLAT FOR
LOT 5 MAP BOOK 42 PAGE 351
LOT 20 MAP BOOK 52 PAGE 184
 PREPARED FOR:
BLAKENEY OFFICE III, LLC
 CITY OF CHARLOTTE, PROVIDENCE TOWNSHIP
 MECKLENBURG COUNTY, NORTH CAROLINA

500 K. Clanton Road
 Charlotte, NC 28217
 704-523-2051 (fax)

1/1



FOR REGISTRATION J. DAVID GRANBERRY
REGISTER OF DEEDS
MECKLENBURG COUNTY, NC
2011 MAR 03 02:14:02 PM
BK:53 PG:67-68 FEE:\$21.00

INSTRUMENT # 2011026605



2011026605

J. DAVID GRANBERRY
REGISTER OF DEEDS, MECKLENBURG
COUNTY & COURTS OFFICE BUILDING
720 EAST FOURTH STREET
CHARLOTTE, NC 28202

PLEASE RETAIN YELLOW TRAILER PAGE

It is part of the recorded document, and must be submitted with original for re-recording
and/or cancellation.

Filed For Registration: 03/03/2011 02:14:02 PM

Book: MAP 53 Page: 67-68

Document No.: 2011026605

MAP 2 PGS \$21.00

Recorder: APRIL JONES



2011026605